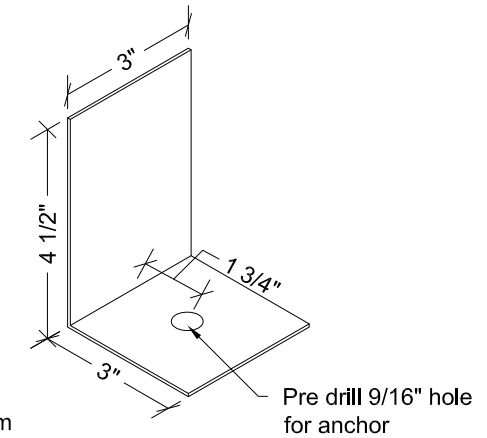
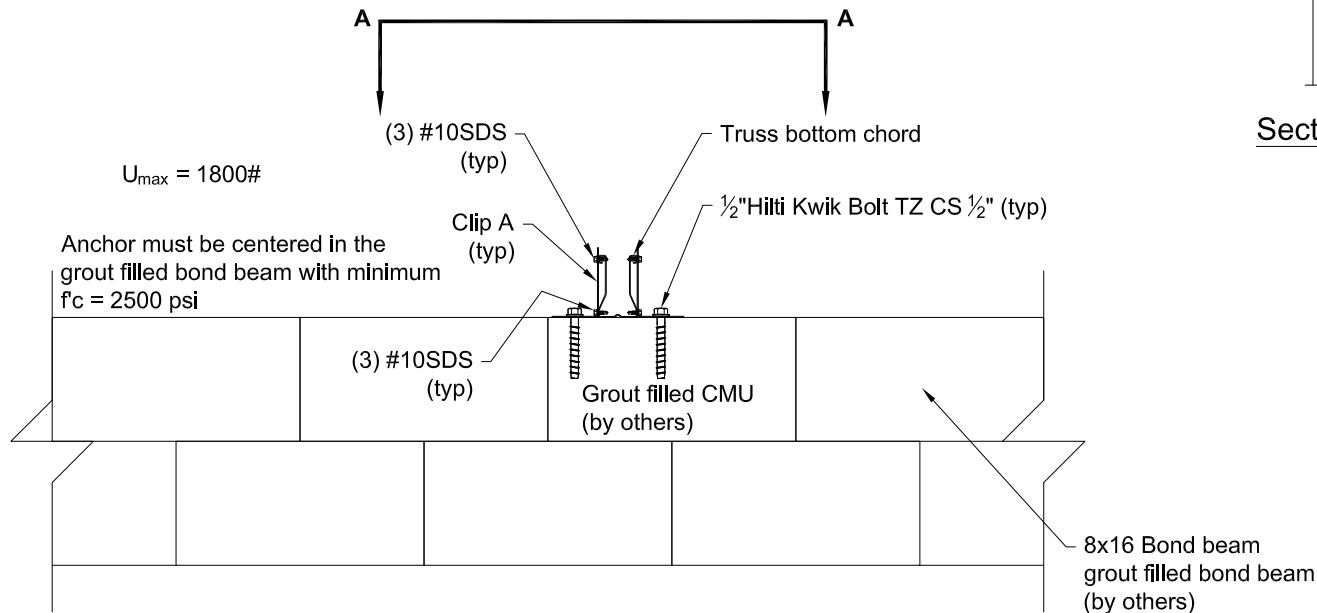


**Section A-A**



**Clip A**

14g ASTM A653 SS Grade 50 Class 1 G60  
Bare metal thickness =  $t = 0.0677"$



Anchor must be centered in the grout filled bond beam with minimum  $f'_c = 2500$  psi

Note:  
Grout is normal weight concrete

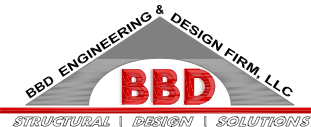
**General Notes:**

1. SDS = Self-Drilling Screw.
2. All edge distances, end distances, and spacing for #10 SDS are 5/8" minimum.
3. See Hilti catalog for installation guidelines.

COPYRIGHT: The information contained in this document is copyrighted and is the exclusive property of ITW Building Components Group, Inc. Any use, duplication, or transfer of these documents without the expressed, written consent of ITW Building Components Group, Inc. is strictly prohibited.

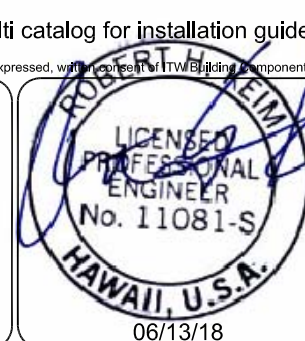
**TrusSteel®**

Engineering Services Provided by ITWBCG.  
13723 Riverport Dr., Suite 200  
Maryland Heights, MO 63043  
Phone: (800) 326-4102



1552 6th Street S.E. - Winter Haven, FL 33880  
Phone: (863) 875-5602 - Fax: (863) 508-6496  
www.BBDEngineering.com

Prometheus Warehouse  
Hawaii  
Prepared For:  
Gecko Steel Truss, LLC



Sheet Title:  
Special Truss-to-Bearing  
Connection

Date: 06/13/18

Sheet Number:  
D-3

Job Number:  
E07034-17

06/13/18